



KEEPIN' UP THE BUZZ!

BCNA Buzz—A quick update of BCNA doings.

Keeping you in touch and involved

BCNA SUMMER 2014 CLASSES

BUTTERFLIES ARE SURVIVORS! Instructor Jan Chu

Indoor class: Thursday, June 19, 6 to 8 pm. Preceded by optional potluck supper and butterfly viewing in Jan's garden from 5 to 6 pm.

Field classes: Saturday, June 21, 9:30 am to 1:30 pm and Sat., June 28, 9:30 am to 1:30 pm



BATS Instructor Rick Adams

Indoor class: Wednesday, June 25, 6:30 to 9 pm

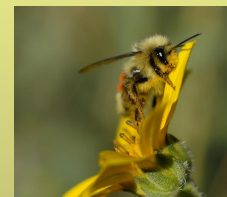
Field class: Thursday, June 26, 7 to 11 pm

NATIVE BEES DIVERSITY AND NATURAL HISTORY

Instructor Virginia Scott

Indoor class: Wednesday, June 25, 6:30 to 9 pm

Field class: Thursday, June 26, 7 to 11 pm



MICROPHOTOGRAPHY: WILDFLOWERS, BUTTERFLIES, BEETLES & MORE

Instructor Steve Jones

Indoor class: Thursday, July 24, 7 to 9 pm

Field classes: Saturday, July 26, 7:30 to 11 am and Saturday, August 2, 7:30 to 11 am

BCNA MEMBERS GET DISCOUNTS ON ALL CLASSES

Sign Up For All Classes at:

<http://bcna.org/education.html>

PURGE YOUR SPURGE! Myrtle Spurge is a common garden plant, but it's illegal in Colorado. Pull myrtle spurge from your garden, bring it to EcoCycle/ReSource at 6400 Arapahoe Avenue between 9 a.m. and noon on Saturday, May 10, 2014 and we'll give you FREE native plants!



Boulder County Nature Association

Boulder County Native Plant Masters Program

Basic Botany Refresher Class

May 14, 6:30-8:30 pm and May 17, 8:30am -12:30 pm Instructor- Megan Bowes

Your introduction to (or refresher on) botanical terminology, the basics of dichotomous keying and the characteristics of Colorado's most species-rich families.

Prairie Dogs and Vegetation Management

May 17, 8:30am – 1:00pm Instructors- John Vickery and Chris Prah

Prairie Dogs and Vegetation Management May 17, 8:30am – 1:00pm Meets at: Coalton Trail Trail-head and Parking Lot

In this class we will cover basic prairie ecology and learn the truths about the interactions of prairie dogs and plants in our prairie ecosystems. We will learn to identify many of the plants commonly associated with prairie dog colonies.

South Boulder Grasslands Open Space

May 31, June 7 and 14, (Saturdays) 8:30am – 12:30pm Instructor- John Vickery

Come to this class series to learn about native and non-native plants in a scenic setting within a large expanse of protected lands with intact, shortgrass prairie plant communities.

Riparian Corridors

Sept. 20 and 27, (Saturdays) 8:30am – 12:30pm Instructors- Megan Bowes & Ann Lezber

This class will highlight the dominant plants found growing in the woody overstory of riparian corridors as well as plants in the woody and/or herbaceous understories. We'll visit one site typical of the Front Range plains life zone and one of the foothills/montane zones.

<http://www.eventbrite.com/o/csu-extension-native-plant-master-program-boulder-county-6237139481>



A Special "Thank You" to Dr Kenneth Evenson and His Family!

Twelve years ago the Evenson family established the Evenson Cat Fund to honor Dr. Kenneth Evenson. Dr. Evenson worked for 40 years at NIST, achieving an international reputation as a great physicist. He was very active in our community as the Poorman Fire Chief

for decades. He had a strong love of nature and the fascinating cats of Boulder County. This on-going grant funds research related to the health Boulder Counties wild

Fyi

Each year BCNA sponsors research projects. Reports from some of those projects are listed here.

[Genetic Effects of Post-Plague Recolonization in Black-Tailed Prairie Dogs \(2008\)](#)

[Post-Plague Re-colonization in Black-Tailed Prairie Dogs \(2009\)](#)

[Spatial Heterogeneity of Nitrogen in Plant Invasion Project Progress Report \(2008\)](#)

[Front-range Pika Project \(2010\)](#)

[Butterfly Species and Populations 2007-2011 \(2012\)](#)

[Fritillary Butterfly Gene Flow as an Indicator of Ecological Connectivity \(2012\)](#)

One of the many ways BCNA contributes to the health of Boulder County's natural environment!